

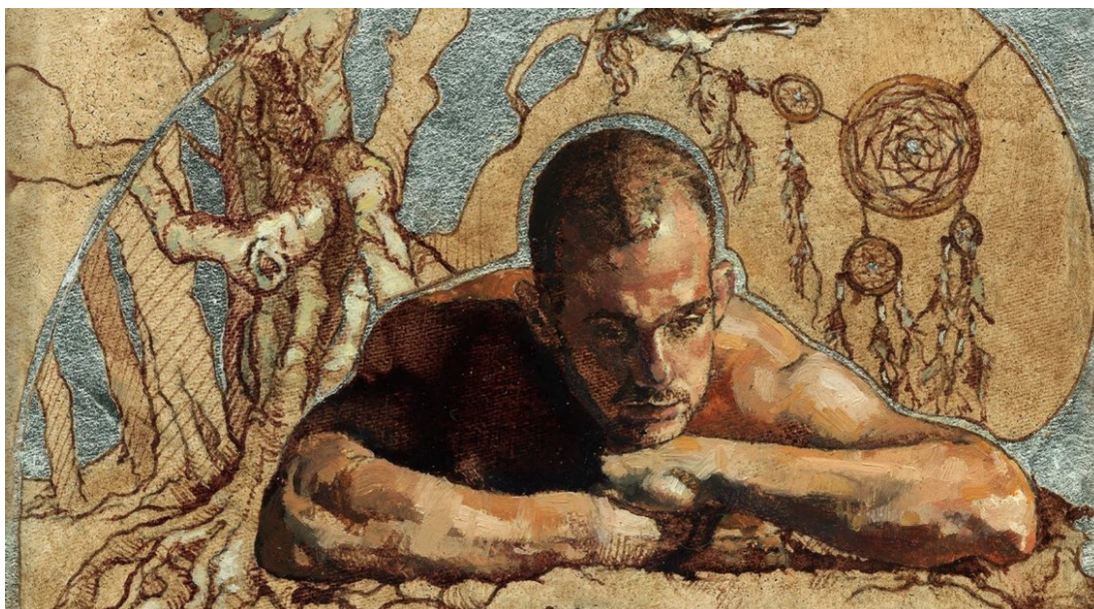
June 2023 Newsletter

From The Executive Director

“Never underestimate the power of dreams and the influence of the human spirit. We are all the same in this notion: The potential for greatness lives within each of us.”

~Wilma Rudolph

(Wilma Glodean Rudolph (June 23, 1940 – November 12, 1994) was an African American sprinter who overcame childhood polio and went on to become a world-record-holding Olympic champion and international sports icon in track and field following her successes in the 1956 and 1960 Olympic Games)



The Traveller - Jacqueline Gomez

Influence is defined as the power to shape policy or ensure favorable treatment from someone, especially through status, contacts, or wealth and the capacity to have an effect on the character, development, or behavior of someone or something.

We may never know the influence we have on others we encounter. Whether it is our family, friends, children, or a stranger- we can impact them for reasons we could never conceive. Our influence can last a lifetime or not surface until years after an experience.

Allowing ourselves to dream can influence our own outcomes, as well.
Keeping our spirits high and dreaming big can leave a lasting impact
and help mold the world into a better place for us all.

WCEDP EVENTS



Startups and Small Businesses- Join Us on June 14, 2023!

Wright County Economic Development Partnership is working with Launch Minnesota to host an event series spotlighting the startup and small business resources available in our community.

Welcoming Wednesday experts for June are:

- Colleen Landkamer, USDA Rural Development
- Josh Laffen, MN Business Financial Corporation
- Joe Kammermeier, MN Business Financial Corporation
- Marshall Hogenson, SCORE
- Donna Corbo, Women Venture

Each speaker will present on what their organization has to offer and available for questions during breaks.



Wright County Government Center

3650 Braddock Ave NE
Buffalo, MN 55313



For more information and to register today-
<https://wrightpartnership.org/events>



Welcoming Wednesdays
for Startups and Small Businesses
Make Connections. Get Answers.

Future Welcoming Wednesday Event:
Benton County Economic Development Partnership
July 12, 2023

21st Annual Golf Open Fundraiser This Years Priemer Sponsor is Ayars & Ayars, Inc!



SAVE THE DATE

Wednesday, September 13, 2023
10AM Shotgun Start
Albion Ridges Golf Course
7771 20th St NW
Annandale, MN 55302

Sponsorship & Registration Information Coming Soon!

WCEDP PARTNER EVENTS



Buffalo Days

June 11-18, 2023



WEDNESDAY TO SATURDAY **FOOD COURT**, by splashpad
Corn dogs, gryos, pizza, seafood, popcorn, more

THURSDAY TO SUNDAY **CARNIVAL**, Sturges Park
Advance wristband vouchers sales at Cub Foods starting soon

THURSDAY **KIDDIE PARADE**, 6:30 pm
Walk from Library to Sturges Park in costume

MOVIE IN THE PARK, 9 pm,
Band Shell, **Rumble**

FRIDAY **BEER GARDEN**, 6 pm, Sturges Park
Chopper, **World's Nuttiest DJ**, 8 pm,
FIREWORKS, Dusk, Sturges Park

SATURDAY **FISHING KLINICS FOR KIDS**
9:30 am, Sturges Park

GRAND PARADE, 6 pm
Downtown Buffalo

SUNDAY **ROYALTY CORONATION**
6 pm, Buffalo High School



CLICK HERE FOR FULL LIST OF EVENTS

WCEDP PARTNER EVENTS



ALBERTVILLE'S
FRIENDLY CITY DAYS
June 7-11
2023
Albertville



POP ROCKS
Fri., June 9 • 10:15 PM-12:45 AM
Jake Nelson Band • 7:00-10:00 pm
Main Stage
BEER GARDEN CLOSES 1:00 AM

CRAFT BEER NIGHT
Thurs., June 8 • 6:00-10:00 PM



Music by
Midwest Mayhem • 6:00-10:00 PM
Sponsored by Albertville Fire Relief Association
Beer Garden Stage



IV PLAY
Sat., June 10 • 9:30 PM-12:30 AM
Mason Dixon Line • 7:00-9:00 pm
Main Stage
BEER GARDEN CLOSES 1:00 AM



FIREWORKS
FRI., JUNE 9
10:00 PM

SPAGHETTI DINNER
Sat., June 10 • 4:00-7:00 PM
Music by George Jundt 4:30 PM - St. Alberts Parish Center
Sponsored by the Albertville Royalty



PARADE
SUN., JUNE 11
12:30 PM

FIREWORKS SPONSORS



EVENT SPONSORS



- American Engineering Testing
- Ardaigh Suas Academy of Irish Dance
- Border States Electric
- Coborn's
- Crow River News
- Duane's Septic Service
- Emma's Express
- Eye West Vision Clinic & Optical
- Gravity Dance

ENTERTAINMENT SPONSORS



EVENT SPONSORS



- Gries, Lenhardt, Allen PLLP
- Marksman Metals
- Minneapolis Electrical JATC
- MVP Mechanical Services
- National Karate
- Pelco Machine
- Republic Services
- Schulte's Greenhouse
- World Taekwondo Academy

Full Event Schedule On Back!

www.albertvillefriendlycitydays.com

CLICK HERE FOR FULL LIST OF EVENTS

ANNOUNCEMENTS

Statewide Business Resources!



Launch Minnesota is a statewide collaborative effort to accelerate the growth of startups and amplify Minnesota as a national leader in innovation.

Innovation is everywhere in Minnesota. Whether you're in Roseau or Rochester, Bemidji or Blue Earth, creative entrepreneurs are growing our economy every day. Launch Minnesota is here to help you get your technology startup off the ground.

For the full details on what Launch MN has to offer go to <https://mn.gov/launchmn/>



Whether you're looking to expand an existing business, relocate from another state or country, or need regulatory and permitting guidance for a complex startup, expansion or relocation, our business consultants have the right background, information, and connections to other state and local agencies to help turn your plans to reality.

Our business consultants have got you covered at any stage with expert advice and analysis. We're located across the state and can help you assess Minnesota opportunities to make your business grow. And we're ready to serve you now - Join us! Contact us at 651-259-7432, JoinUsMN@state.mn.us.

ANNOUNCEMENTS CONT.

Apply For An Electric School Bus Grant



The Minnesota Pollution Control Agency (MPCA) requests proposals from eligible applicants to fund electric school buses in the state of Minnesota. The grant reduces diesel emissions and improves air quality and public health by removing older diesel buses and replacing them with new, cleaner electric buses. The primary goals of this project are to improve the health and wellbeing of children and communities by reducing diesel and greenhouse gas emissions in Minnesota and promote the use of technology that utilizes clean, renewable energy sources.

Proposals are due no later than 4:30 p.m. Central Time on August 15, 2023.

READ MORE



We inspire confidence in our clients by meeting every challenge with a combination of knowledge, expertise, innovative thinking and relentless pursuit of a better solution. It's a mindset summed up in three simple words: Consider It Done. And it's a standard our employees hold themselves to every day. (Now Hiring)

Be a part of a great business here in Wright County
& a part of the electric ATV's!

Polaris shipping new electric ATV, announces quarterly profits up more than 60%

The Ranger XP Kinetic sold out within hours when it was first offered, and a new order window opens this summer.

Polaris has started to ship the Ranger XP Kinetic, the company's new lithium ion-powered rechargeable side-by-side that is the first product from the 10-year partnership between Polaris and Zero Motorcycles.

READ MORE

ANNOUNCEMENTS CONT.

Ridgewater College & Wright Tech Center Continue To Partner Together For Adult Education & Trainings!



DETAILS

First session is **Tuesday, June 20 at 6 p.m.**, then schedule will follow as below:

Wednesdays, 6 - 10 p.m.

EMR: June 28 - August 16

EMT: June 28 - October 4

**No class July 12; will meet July 11 instead.
After August 16, EMT students will meet online rather than in-person.*

LOCATION

Wright Tech Center
1405 3rd Ave NE
Buffalo, MN

COURSE FEE

EMR: \$600

EMT: \$1600

Our blended EMR and EMT courses provide dynamic and interactive computer-based training directly to students 24 hours a day, 7 days a week. Students come to class "ready to go" already having learned the subject matter.

Hands-on sessions ensure that the students master both the knowledge and skills needed to successfully complete the course.

NOTES:

- Includes textbook and FISDAP exams.
- National Registry exam fee is not included (EMT).
- Due to the accelerated format, self-study is highly recommended.
- As part of the ambulance ride-alongs, EMT participants must be able to pass a background check.

REGISTER ONLINE

Ridgewater.edu/customized

REGISTER NOW



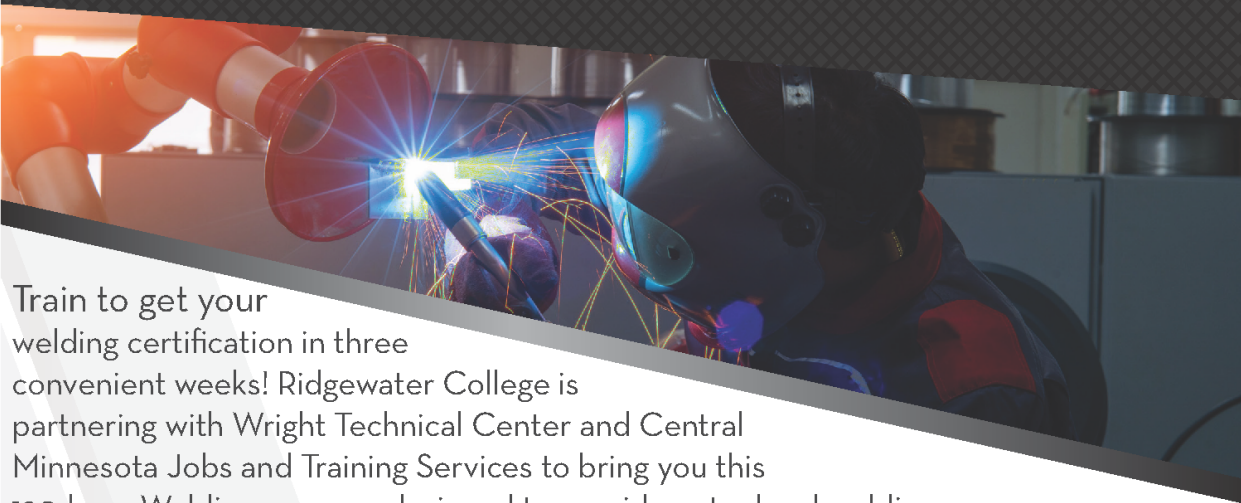
This course is offered through a partnership with Central Minnesota EMS and Wright Technical Center.



A member of Minnesota State and equal opportunity, affirmative action educator and employer. This document available in alternate formats upon request by calling 800-722-1151. Consumers with speech or hearing disabilities may contact us via their preferred Telecommunications Relay Service.

ANNOUNCEMENTS CONT.

> Summer Welding Training



Train to get your welding certification in three convenient weeks! Ridgewater College is partnering with Wright Technical Center and Central Minnesota Jobs and Training Services to bring you this 120-hour Welding program designed to provide entry level welding skills. We will train students to American Welding Society TIG Welding and 2F MIG Certification standards.

DETAILS

Dates: June 26-July 18, 2023,
Mon-Fri most weeks (no class July 3-4)

Time: 7:00 am - 3:30 pm

Location: Wright Technical Center,
1405 Third Ave NE, Buffalo, MN 55313

Cost: \$3,800 per person

Equipment: Tuition includes welding helmet,
gloves, safety glasses, welding jacket, and
chipping hammer/brush.

REGISTER TODAY:

[https://mnscu.rschooltoday.com/public/getclass/
category_id/319/program_id/38](https://mnscu.rschooltoday.com/public/getclass/category_id/319/program_id/38)

More Info: 320-234-8538

TRAINING TOPICS

- Blueprint reading
- Welder set-up
- Welding equipment use and safety
- MIG 1G/2F welding skills
- TIG welding skills
- Welding codes
- Testing procedures
- Hands-on practice time

AWS Certification exam included –
date to be determined with participants.
Lunch not included



In partnership with Tim Zipoy
of CMJTS



320-234-8536

www.ridgewater.edu/customized



RIDGEWATER
COLLEGE

**CUSTOMIZED TRAINING &
CONTINUING EDUCATION**

A member of Minnesota State and an equal opportunity, affirmative action educator/employer. This document is available in alternative formats upon request by calling 800-722-1151. Consumers with speech or hearing disabilities may contact us via their preferred Telecommunications Relay Service. 4/23

REGISTER NOW

PARTNER NEWS

I94 West Chamber of Commerce - Now Hiring - President



The I-94 Chamber received the resignation of their Chamber President, Greg Anzelc. We are super appreciative for Greg and his leadership over the past few years! He will continue to work with us during his transition into a new position and as we begin our immediate search for our new President!

For full job description & application information click Read More.

READ MORE >>



WRIGHT COUNTY
ECONOMIC
DEVELOPMENT
PARTNERSHIP
FRIENDS

Sign up for a new home security system and receive three months of free monitoring!

Limited-time offer. Certain restrictions apply. Not to be combined with any other offers.

763.477.3664 • wh-security.com • info@wh-security.com

READ MORE

PARTNER NEWS CONTINUED

2023 Maple Lake Messenger's Lifestyle Issue



Want to know what is going on around Wright County this summer?

Maple Lake Messenger Lifestyle Guide has information and events all throughout Wright County for you to check out!

Click Below the Full 2023 Lifestyle Issue

READ MORE



A Culture of Leadership as a Tool for Retention

Wednesday, June 7, 2023

11 a.m. to 12:30 p.m.

Register now

Join us for an engaging virtual discussion on how leadership impacts culture and retention in a job seeker's market. Our panel of employers and subject matter experts will discuss how to make leadership your organization's secret weapon. Please join prepared to share your experiences and ideas!

REGISTER NOW